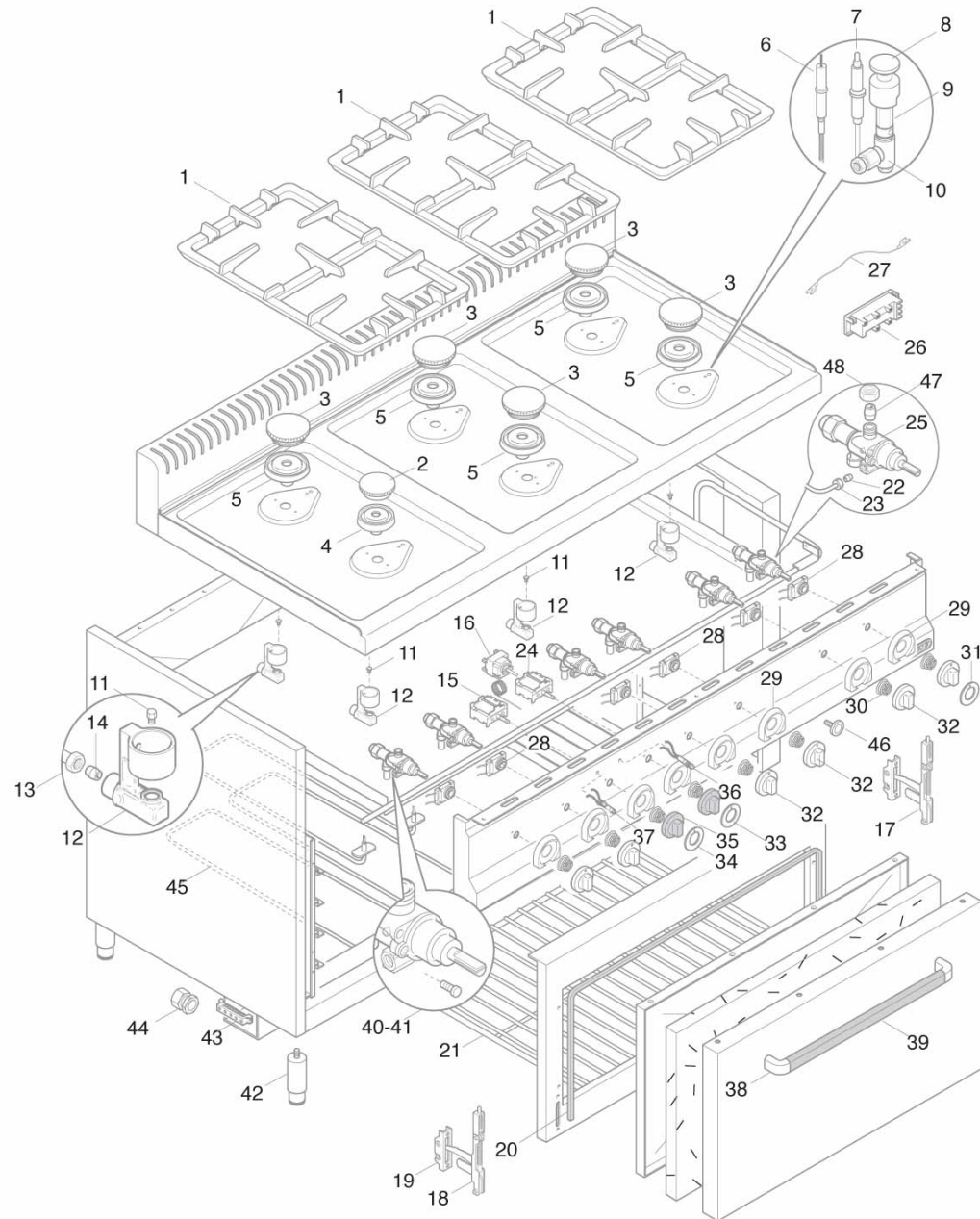




G7F4PW+FE





G7F4PW+FE

| Pos. Item | Codice Code | Descrizione | Item Description | Designation articles | Artikelbeschreibung | Decripción artículos | N° pezzi - No. pieces | | | | |
|-----------|-------------|--------------------------------|--------------------------------|--------------------------------|--------------------------------|--------------------------------|-----------------------|--|--|--|---|
| 1 | 31856700 | Griglia smaltata rough e | enamelled grill rough ev | Grille ÉmailÉe rough ev | Emaillierter rost rough ev | Parrilla esmaltada rough ev | | | | | 2 |
| 2 | 31283300 | Spartifiamma r. cuc.'pw' s.700 | Spartifiamma r. cuc.'pw' s.700 | Spartifiamma r. cuc.'pw' s.700 | Spartifiamma r. cuc.'pw' s.700 | Spartifiamma r. cuc.'pw' s.700 | | | | | 1 |
| 3 | 31283600 | Spartifiamma u.r. cuc.'pw' s.7 | Spartifiamma u.r. cuc.'pw' s.7 | Spartifiamma u.r. cuc.'pw' s.7 | Spartifiamma u.r. cuc.'pw' s.7 | Spartifiamma u.r. cuc.'pw' s.7 | | | | | 3 |
| 4 | 31283200 | +corpo bruc. r. cuc.'pw' s.700 | +corpo bruc. r. cuc.'pw' s.700 | +corpo bruc. r. cuc.'pw' s.700 | +corpo bruc. r. cuc.'pw' s.700 | +corpo bruc. r. cuc.'pw' s.700 | | | | | 1 |
| 5 | 31283500 | +corpo bruc. u.r. cuc.'pw' s.7 | +corpo bruc. u.r. cuc.'pw' s.7 | +corpo bruc. u.r. cuc.'pw' s.7 | +corpo bruc. u.r. cuc.'pw' s.7 | +corpo bruc. u.r. cuc.'pw' s.7 | | | | | 3 |
| 6 | 00000000 | Ricambio mancante | ----- | ----- | ----- | ----- | | | | | - |
| 7 | 31288300 | Termocoppia 600mm cuc.'pw' s.7 | Termocoppia 600mm cuc.'pw' s.7 | Termocoppia 600mm cuc.'pw' s.7 | Termocoppia 600mm cuc.'pw' s.7 | Termocoppia 600mm cuc.'pw' s.7 | | | | | 4 |
| 8 | 24292000 | Cappello pilota cuc.'pw' s.700 | Cappello pilota cuc.'pw' s.700 | Cappello pilota cuc.'pw' s.700 | Cappello pilota cuc.'pw' s.700 | Cappello pilota cuc.'pw' s.700 | | | | | 4 |
| 9 | 22993700 | Venturi pilota cuc.'pw' s.700 | Venturi pilota cuc.'pw' s.700 | Venturi pilota cuc.'pw' s.700 | Venturi pilota cuc.'pw' s.700 | Venturi pilota cuc.'pw' s.700 | | | | | 4 |
| 10 | 24291600 | Corpo pilota cuc.'pw' s.700 sp | Corpo pilota cuc.'pw' s.700 sp | Corpo pilota cuc.'pw' s.700 sp | Corpo pilota cuc.'pw' s.700 sp | Corpo pilota cuc.'pw' s.700 sp | | | | | 4 |
| 11 | 40000000 | Ugello: indicare modello e tip | Injector: specify model and ga | Gliceur: specifier modele et g | Duese: modell und gas-typ zeig | Tobera: precisar modelo y tipo | | | | | 1 |
| 12 | 32328000 | Portaugello cuc.'pw' s.700 | Portaugello cuc.'pw' s.700 | Portaugello cuc.'pw' s.700 | Portaugello cuc.'pw' s.700 | Portaugello cuc.'pw' s.700 | | | | | 4 |
| 13 | 32811600 | Dado arc prembicono d.10 cuc. | Dado arc prembicono d.10 cuc. | Dado arc prembicono d.10 cuc. | Dado arc prembicono d.10 cuc. | Dado arc prembicono d.10 cuc. | | | | | 4 |
| 14 | 32777200 | Bicono arc per tubo d.10 | Bicono arc per tubo d.10 | Bicono arc per tubo d.10 | Bicono arc per tubo d.10 | Bicono arc per tubo d.10 | | | | | 4 |
| 15 | 22049800 | Commutatore per fe 2/1-cpe40/e | Selector - cpe40/e9cp40 | Commutateur - cpe40/e9cp40 | Umschalter - cpe40/e9cp40 | Conmutador - cpe40/e9cp40 | | | | | 1 |
| 16 | 30064900 | Termostato trif.270Ø x fe 2/1 | Thermostat 270Ø - fe 2/1 | Thermostat 270Ø - fe 2/1 | Thermostat 270Ø - fe 2/1 | Termostato 270Ø - fe 2/1 | | | | | 1 |
| 16 | 22069700 | Termostato trif.sicur.fry-top | Security thermostat | Thermostat de surete | Sicherheitthermostat | Termostato de seguridad | | | | | 1 |
| 17 | 22608100 | Cerniera dx x fe1/fg1 fcd8-fsd | Right hinge | Charniere droite | Scharnier rechts | Bisagra derecha | | | | | 1 |
| 18 | 22607800 | Cerniera sx x fe1/fg1 fcd8-fsd | Left hinge | Charniere gauche | Scharnier links | Bisagra izquierda | | | | | 1 |
| 19 | 22608200 | Cern.fissa portarullino fe1fg1 | Fixed hinge | Charniere fixe | Festes scharnier | Bisagra fija | | | | | 2 |
| 20 | 22594200 | Guarnizione forno fg1-fe1 700/ | Oven seal fg1-fe1 700/900 | Joint four fg1-fe1 700/900 | Dichtung backofen fg1-fe1 700/ | Empaquetadura horno fg1-fe1 70 | | | | | 1 |
| 21 | 31856800 | Grc 2/1 gn - griglia forno cuc | Grc 2/1 gn-cooker oven grill | Grc 2/1 gn-grille four | Grc 2/1 gn- backofen-rost s.70 | Grc 2/1 gn-parrilla horno | | | | | 1 |
| 22 | 31777700 | Bicono d. 4 per rubinetto 21s | Double cone for tap 21s | Bicone pour robinet 21s | Doppelkegel fur hahn 21s | Doble cono para llave de paso | | | | | 4 |
| 23 | 31924700 | Raccordo per tubo diam. 4 mm | Pipe fitting Ø4 mm | Raccord pour tuyau Ø4 mm | Anschluss fur rohr Ø4 mm | Racor para tuba Ø4 mm | | | | | 4 |
| 24 | 22050300 | Interr. quadrip. fry-top/700; | Switch | Interrupteur | Schalter | Interruptor | | | | | 1 |
| 25 | 31273700 | Rubinetto pel21s;9x1;bypas100 | Cock pel 21/s | Robinet pel 21/s | Hahn pel 21/s | Llave pel 21s | | | | | 4 |
| 26 | 00000000 | Ricambio mancante | ----- | ----- | ----- | ----- | | | | | - |
| 27 | 00000000 | Ricambio mancante | ----- | ----- | ----- | ----- | | | | | - |
| 28 | 00000000 | Ricambio mancante | ----- | ----- | ----- | ----- | | | | | - |
| 29A | 35954900 | Sottomanopola rossa attr. el. | Sottomanopola rossa attr. el. | Sottomanopola rossa attr. el. | Sottomanopola rossa attr. el. | Sottomanopola rossa attr. el. | | | | | 2 |
| 29 | 35954800 | Red sub-knob gas equipmant | Red sub-knob gas equipment | Sous-manette rouge equip.gas | Rote unterknopf gaseinricht. | Sub-mando rojo equipos gas | | | | | 4 |
| 30 | 35880200 | Molla sottomanopola | Spring for sub-knob | Ressort sous-manette | Unterknopf feder | Muelle sub-mando | | | | | 4 |
| 31 | 31952200 | Serig.rossa manop.gas plg-cpg- | Red gas knob serigraphy | Serigraphie rouge manette | Rote drehknoptsferigraphie | Serigrafia roja mando | | | | | 4 |
| 32 | 35877100 | Manopola rossa p. 8x6,5 a 180° | Red knob p. 8x6,5 a 180°ral300 | Manette rouge p. 8x6,5 a 180° | Drehknopf p. 8x6,5 a 180°ral30 | Mando rojo p. 8x6,5 a 180°ral3 | | | | | 4 |
| 33 | 31953500 | Serig.rossa manop.frytop/forno | Knob serigraphy | Serigraphie manette | Drehknopfsferigraphie | Serigrafia mando | | | | | 1 |
| 34 | 31952600 | Serig.rossa manop.forno el.mul | Electric knob serigraphy | Serigraphie manette electr. | Drehknopfsferigraphie | Serigrafia mando electr. | | | | | 1 |
| 35 | 35877600 | Man. rossa p.6x4,6 a 180°ral30 | Red knob p. p.6x4,6 a 180°ral3 | Manette rouge p.6x4,6 a 180°ra | Drehknopf p.6x4,6 a 180°ral300 | Mando rojo p.6x4,6 a 180°ral30 | | | | | 2 |
| 36 | 30168500 | Spia arancio 230v d.10mmt150Ø | Orange lamp 230v | Temoin lumineux orange 230v | Orange kontrollampe 230v | Piloto naranja 230v | | | | | 1 |
| 37 | 30168800 | Spia verde 230v d.10mmt150Ø | Green lamp 230v | Temoin lumineux vert 230v | Grune kontrollampe 230v | Piloto verde 230v | | | | | 1 |
| 38 | 31979000 | Terminale crom.lucido plastica | Chromium-plated terminal | Terminal chromÉ poli | Verchromte grifendverschluss | Terminal cromado lustroso | | | | | 2 |



G7F4PW+FE

| Pos. Item | Codice Code | Descrizione | Item Description | Designation articles | Artikelbeschreibung | Decripción artículos | N° pezzi - No. pieces | | | | | |
|-----------|-------------|--------------------------------|--------------------------------|--------------------------------|--------------------------------|--------------------------------|-----------------------|--|--|--|--|---|
| | | | | | | | | | | | | |
| 39 | 31874000 | Maniglia sez.ovale aisi 304 42 | Handle aisi 304 425 x 41 | Poignee aisi 304 425 x 41 | Griffe aisi 304 425 x 41 | Asa aisi 304 425 x 41 | | | | | | 1 |
| 40 | 22783500 | By-pass 45 x rubin. pel20/21s | By-pass 45 for tap pel20/21s | By-pass 45 pour robinet pel20/ | By-pass 45 fur hahn pel20/21s | By-pass 45 para pel20/21s | | | | | | 1 |
| 41 | 22783600 | By-pass 55 x rubin. pel20/21s | By-pass 55 for tap pel20/21s | By-pass 55 pour robinet pel20/ | By-pass 55 fur hahn pel20/21s | By-pass 55 para pel20/21s | | | | | | 3 |
| 42 | 24684200 | Piedino inox 1 1/2 h-125/175 | Foot 1 1/2 h-125/175 | Pied 1 1/2 h-125/175 | Fuss 1 1/2 h-125/175 | Pata 1 1/2 h-125/175 | | | | | | 4 |
| 43 | 25185100 | Kit morsettiera 10 mmq | Terminal board 10 mmq | Bornier 10 mmq | Klemmenleiste 10 mmq | Bornera 10 mmq | | | | | | 1 |
| 44 | 31186500 | Pressacavo pg21 bimed e7p4 fe | Cable clamp | Serre-cable | Kabelklemme | Sujeta-cable | | | | | | 1 |
| 45A | 31320400 | Resistenza inferiore 1500w 240 | 1500w 240v lower heating eleme | RÉsistance infÉrieure 1500w 24 | Unteres widerstand 1500w 240v | Resistencia inferior 1500w 240 | | | | | | 3 |
| 45 | 31320000 | Resistenza superiore 990w 240v | 990w 240v higher heating elem | RÉsistance superieur 990w 240v | Oberer widerstand 990w 240v | Resistencia superior 990w 240v | | | | | | 3 |
| 46 | 32583800 | Chiusura magnetica | Magnetic closure | Fermeture magnetique | Magnetverschluss | Cierre magnetico | | | | | | - |
| 47 | 32777300 | Bic.ottone d.10 | Double cone d.10 | Bicone d.10 | Doppelkegel d.10 | Doble cono d.10 | | | | | | 8 |
| 48 | 32811800 | Dado d. 10-m 16 gl/lx-plg-cpg | Nut d. 10-m 16 gl/lx-plg-cpg | Ecrou d. 10-m 16 gl/lx-plg-cpg | Mutter d. 10-m 16 gl/lx-plg-cp | Tuerca d. 10-m 16 gl/lx-plg-cp | | | | | | 8 |